

Questionnaire for tooth chain drives

Sender:

Company:

Address:

Phone:

Fax:

Name:

Receiver:

Renold GmbH

Tooth Chain Sales

Zur Dessel 14

31028 Gronau

Phone: +49 (0) 5182 / 587-0

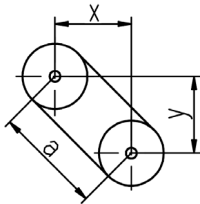
Fax: +49 (0) 5182 / 587-30

Mail:toothchain@renold.com

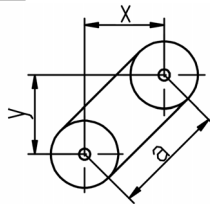
Application: new substitute for:

Orientation of drive:

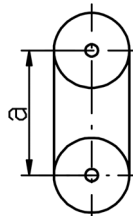
1



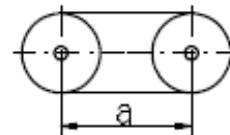
2



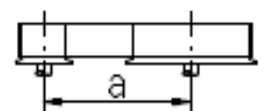
3



4



5



Driver sprocket = top left
 = bottom right

Running direction: right
 left

P = [kW]
 Mmax. = [Nm]
 at n = [min⁻¹]
 n max. = [min⁻¹]

a = [mm]
 Δ a = [mm] retensioning
 x = [mm]
 y = [mm]

Sprocket wheels:

Speed
 Width
 Diameter
 Shaft Ø
 Keway acc. to DIN 6885
 Hub length

driver

= [min⁻¹]
 = [mm]
 = [mm]
 = [mm]
 =
 = [mm]

driven

[min⁻¹]
 [mm]
 [mm]
 [mm]

 [mm]

Driver unit: Diesel hydraulic electric-motor
 Drive characteristics: uniform reversing softstart

impact factor
 [°] max. angular deviation for positioning drives
 [h] operating hour per day
 [h] lifetime required

Housing: no closed gearbox hood
 Greasing: grease lubrication bath lubrication forced feed lubrication
 Quantity: single series: pcs. / year

Further information:
 (raw sketch if possible)